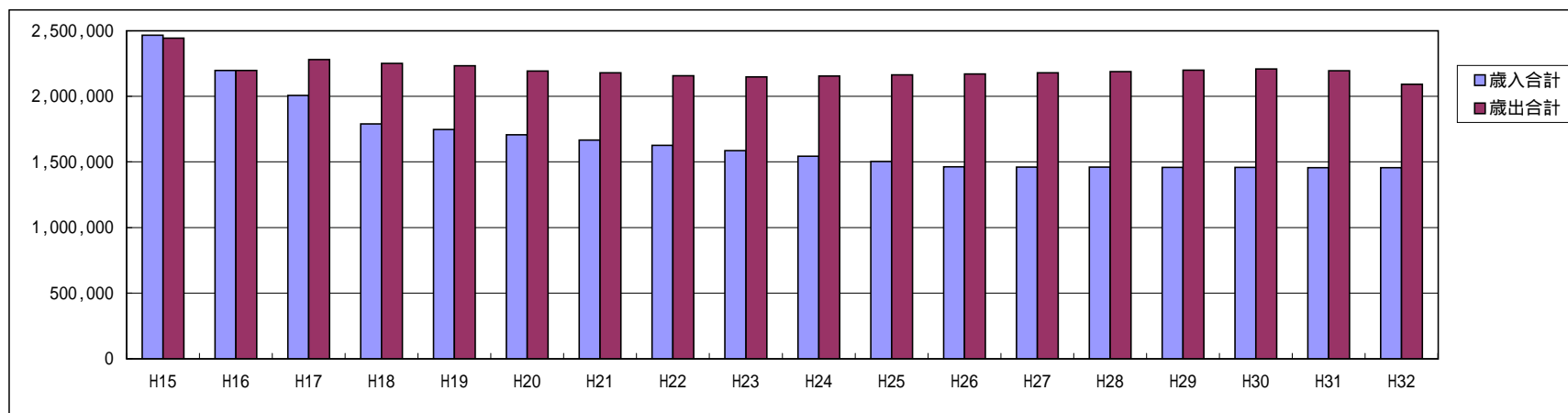


# 1 合併しない場合の財政推移

## (1) 大成町

(単位:千円)

区分	H15	H16	H17	H18	H19	H20	H21	H22	H23	H24	H25	H26	H27	H28	H29	H30	H31	H32			
歳入	地方税	118,369	116,932	116,544	115,449	114,351	113,256	112,157	111,062	110,044	109,025	108,006	106,987	105,969	105,002	104,038	103,071	102,104	101,137		
	地方譲与税	21,600	27,300	27,300	27,300	27,300	27,300	27,300	27,300	27,300	27,300	27,300	27,300	27,300	27,300	27,300	27,300	27,300	27,300	27,300	
	その他交付金等	29,607	30,101	30,101	30,101	30,101	30,101	30,101	30,101	30,101	30,101	30,101	30,101	30,101	30,101	30,101	30,101	30,101	30,101	30,101	
	地方交付税	1,405,824	1,320,980	1,281,351	1,241,721	1,202,092	1,162,462	1,122,833	1,083,204	1,043,574	1,003,945	964,315	924,686	924,686	924,686	924,686	924,686	924,686	924,686	924,686	
	国庫支出金	60,860	55,344	11,978	11,978	11,978	11,978	11,978	11,978	11,978	11,978	11,978	11,978	11,978	11,978	11,978	11,978	11,978	11,978	11,978	
	道支出金	180,971	127,977	27,697	27,697	27,697	27,697	27,697	27,697	27,697	27,697	27,697	27,697	27,697	27,697	27,697	27,697	27,697	27,697	27,697	27,697
	地方債	255,000	177,400	205,900	205,900	205,900	205,900	205,900	205,900	205,900	205,900	205,900	205,900	205,900	205,900	205,900	205,900	205,900	205,900	205,900	
	その他の収入	395,247	340,655	306,114	129,120	128,990	128,860	128,730	128,600	128,456	128,313	128,170	128,026	127,883	127,737	127,592	127,446	127,300	127,155		
歳入合計	2,467,478	2,196,689	2,006,984	1,789,266	1,748,408	1,707,554	1,666,696	1,625,842	1,585,050	1,544,259	1,503,467	1,462,676	1,461,513	1,460,401	1,459,291	1,458,179	1,457,066	1,455,953			
歳出	人件費	678,000	665,635	665,635	665,635	665,635	665,635	665,635	665,635	665,635	665,635	665,635	665,635	665,635	665,635	665,635	665,635	665,635	665,635		
	物件費	300,766	246,931	246,931	246,931	246,931	246,931	246,931	246,931	246,931	246,931	246,931	246,931	246,931	246,931	246,931	246,931	246,931	246,931		
	維持補修費	25,403	26,709	26,709	26,709	26,709	26,709	26,709	26,709	26,709	26,709	26,709	26,709	26,709	26,709	26,709	26,709	26,709	26,709		
	扶助費	89,733	84,323	84,602	84,104	83,606	83,107	82,609	82,111	81,133	80,156	79,179	78,201	77,224	76,077	74,931	73,784	72,638	71,491		
	補助費等	441,885	443,568	457,000	456,380	455,760	455,140	454,519	453,899	453,216	452,532	451,848	451,165	450,481	449,787	449,092	448,397	447,703	447,008		
	公債費	457,174	466,059	419,002	392,057	376,751	340,217	329,455	311,711	306,270	317,230	328,960	341,360	354,339	367,825	381,752	396,066	386,712	287,076		
	投資的経費	286,406	111,133	192,733	192,733	192,733	192,733	192,733	192,733	192,733	192,733	192,733	192,733	192,733	192,733	192,733	192,733	192,733	192,733		
	その他の経費	164,111	152,331	188,804	186,665	184,525	182,386	180,246	178,107	175,748	173,390	171,031	168,673	166,314	163,918	161,522	159,126	156,729	154,333		
	歳出合計	2,443,478	2,196,689	2,281,416	2,251,213	2,232,650	2,192,857	2,178,837	2,157,835	2,148,375	2,155,315	2,163,026	2,171,406	2,180,366	2,189,615	2,199,305	2,209,381	2,195,789	2,091,917		
歳入歳出差引	24,000	0	-274,432	-461,947	-484,241	-485,304	-512,141	-531,994	-563,325	-611,056	-659,559	-708,730	-718,853	-729,214	-740,013	-751,202	-738,723	-635,963			

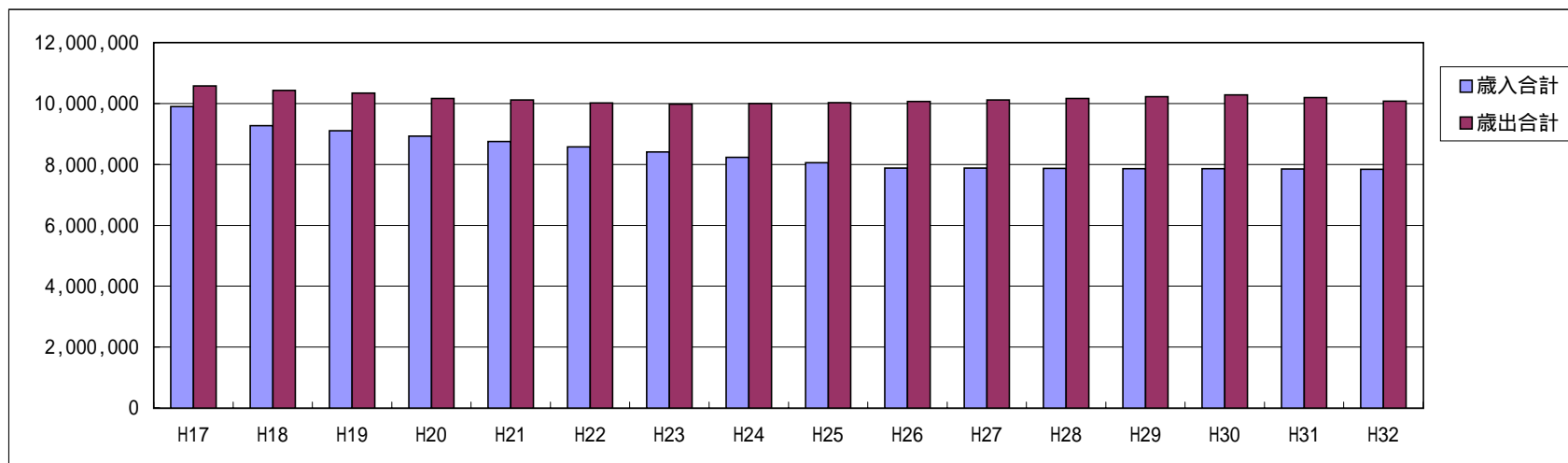


推計人口	H15	H16	H17	H18	H19	H20	H21	H22	H23	H24	H25	H26	H27	H28	H29	H30	H31	H32
総人口	2,609	2,569	2,529	2,486	2,444	2,401	2,358	2,315	2,268	2,221	2,174	2,127	2,080	2,032	1,984	1,936	1,889	1,841
年少人口	255	248	240	234	228	222	216	210	203	196	190	183	176	169	161	154	146	139
生産年齢人口	1,396	1,352	1,308	1,272	1,237	1,201	1,166	1,130	1,097	1,064	1,031	998	965	934	903	871	840	809
老年人口	958	970	981	980	979	978	977	976	968	961	953	946	939	929	920	911	902	893

(単位:人)

#### (4) 3町合算

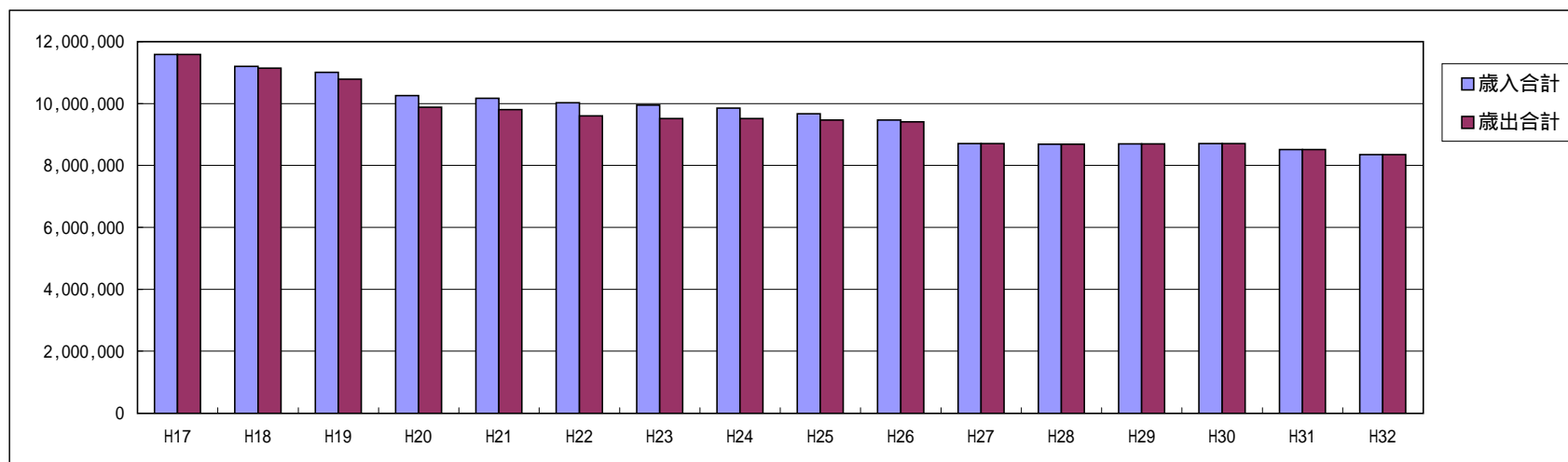
区分	H17	H18	H19	H20	H21	H22	H23	H24	H25	H26	H27	H28	H29	H30	H31	H32
歳入																
地方税	636,696	632,510	628,317	624,128	619,941	615,752	611,078	606,402	601,728	597,054	592,378	588,135	583,893	579,650	575,408	571,163
地方譲与税	162,793	162,793	162,793	162,793	162,793	162,793	162,793	162,793	162,793	162,793	162,793	162,793	162,793	162,793	162,793	162,793
その他交付金等	182,191	182,191	182,191	182,191	182,191	182,191	182,191	182,191	182,191	182,191	182,191	182,191	182,191	182,191	182,191	182,191
地方交付税	5,447,652	5,279,168	5,110,684	4,942,200	4,773,716	4,605,232	4,436,747	4,268,263	4,099,779	3,931,295	3,931,295	3,931,295	3,931,295	3,931,295	3,931,295	3,931,295
国庫支出金	382,852	382,852	382,852	382,852	382,852	382,852	382,852	382,852	382,852	382,852	382,852	382,852	382,852	382,852	382,852	382,852
道支出金	690,503	690,503	690,503	690,503	690,503	690,503	690,503	690,503	690,503	690,503	690,503	690,503	690,503	690,503	690,503	690,503
地方債	1,198,700	1,198,700	1,198,700	1,198,700	1,198,700	1,198,700	1,198,700	1,198,700	1,198,700	1,198,700	1,198,700	1,198,700	1,198,700	1,198,700	1,198,700	1,198,700
その他の収入	1,200,347	746,498	745,432	744,365	743,299	742,232	740,631	739,031	737,430	735,829	734,228	732,227	730,225	728,223	726,222	724,220
歳入合計	9,901,734	9,275,215	9,101,472	8,927,731	8,753,994	8,580,254	8,405,496	8,230,734	8,055,976	7,881,217	7,874,940	7,868,696	7,862,452	7,856,208	7,849,964	7,843,716
歳出																
人件費	2,153,627	2,153,627	2,153,627	2,153,627	2,153,627	2,153,627	2,153,627	2,153,627	2,153,627	2,153,627	2,153,627	2,153,627	2,153,627	2,153,627	2,153,627	2,153,627
物件費	1,441,368	1,441,368	1,441,368	1,441,368	1,441,368	1,441,368	1,441,368	1,441,368	1,441,368	1,441,368	1,441,368	1,441,368	1,441,368	1,441,368	1,441,368	1,441,368
維持補修費	233,334	233,334	233,334	233,334	233,334	233,334	233,334	233,334	233,334	233,334	233,334	233,334	233,334	233,334	233,334	233,334
扶助費	373,878	374,198	374,518	374,837	375,157	375,477	375,797	376,117	376,437	376,757	377,077	377,397	377,717	378,037	378,357	378,677
補助費等	1,827,308	1,826,644	1,825,979	1,825,314	1,824,649	1,823,984	1,823,319	1,822,654	1,821,989	1,821,324	1,820,659	1,819,994	1,819,329	1,818,664	1,817,999	1,817,334
公債費	2,065,016	1,929,215	1,844,170	1,674,154	1,628,633	1,541,837	1,504,802	1,534,453	1,573,949	1,622,008	1,677,529	1,739,568	1,807,307	1,880,042	1,802,063	1,688,425
投資的経費	1,563,363	1,563,363	1,563,363	1,563,363	1,563,363	1,563,363	1,563,363	1,563,363	1,563,363	1,563,363	1,563,363	1,563,363	1,563,363	1,563,363	1,563,363	1,563,363
その他の経費	916,829	911,298	905,767	900,236	894,705	889,175	883,644	878,113	872,582	867,051	861,520	855,989	850,458	844,927	839,396	833,865
歳出合計	10,574,724	10,433,047	10,342,125	10,166,234	10,114,837	10,022,165	9,977,080	9,998,681	10,030,127	10,070,136	10,117,608	10,168,582	10,225,257	10,286,927	10,197,884	10,073,181
歳入歳出差引	-672,990	-1,157,832	-1,240,654	-1,238,503	-1,360,843	-1,441,911	-1,571,584	-1,767,947	-1,974,151	-2,188,919	-2,242,668	-2,299,886	-2,362,805	-2,430,720	-2,347,921	-2,229,465



## 2 合併した場合の財政推移

【合併した場合】

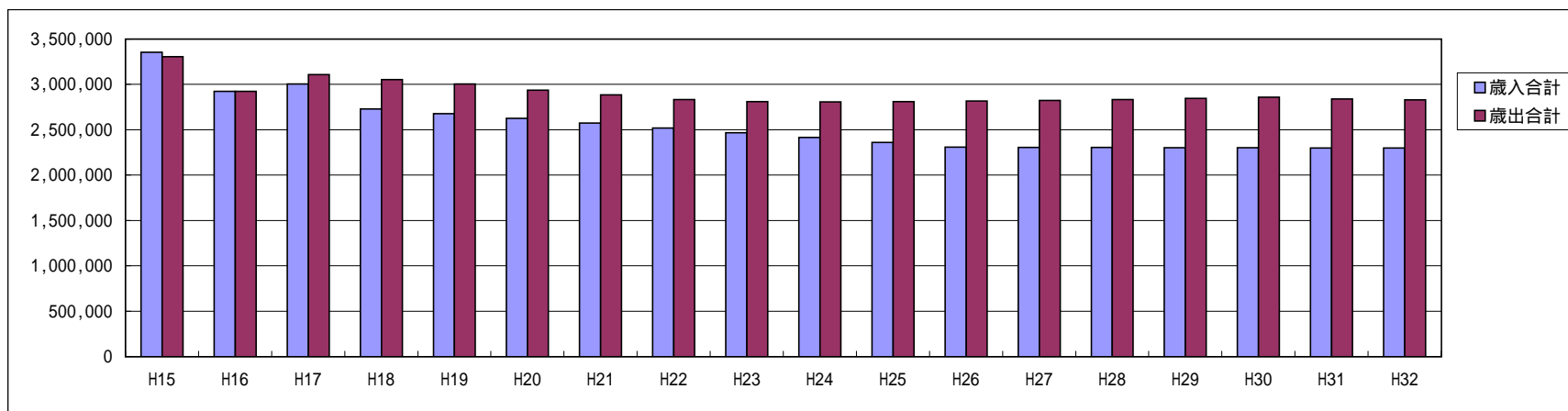
区分	H17	H18	H19	H20	H21	H22	H23	H24	H25	H26	H27	H28	H29	H30	H31	H32	
歳入	地方税	636,696	632,510	628,317	624,128	619,941	615,752	611,078	606,402	601,728	597,054	592,378	588,135	583,893	579,650	575,408	571,163
	地方譲与税	162,793	162,793	162,793	162,793	162,793	162,793	162,793	162,793	162,793	162,793	162,793	162,793	162,793	162,793	162,793	162,793
	その他交付金等	182,191	182,191	182,191	182,191	182,191	182,191	182,191	182,191	182,191	182,191	182,191	182,191	182,191	182,191	182,191	182,191
	地方交付税	5,802,652	5,508,168	5,292,074	5,012,981	4,859,888	4,723,863	4,626,555	4,527,965	4,400,155	4,271,624	4,192,919	3,995,555	3,788,808	3,581,350	3,373,172	3,246,335
	国庫支出金	452,852	452,852	452,852	382,852	382,852	382,852	382,852	382,852	382,852	382,852	382,852	382,852	382,852	382,852	382,852	382,852
	道支支出金	690,503	690,503	690,503	690,503	690,503	690,503	690,503	690,503	690,503	690,503	690,503	690,503	690,503	690,503	690,503	690,503
	地方債	2,824,133	2,824,133	2,824,133	2,342,800	2,342,800	2,342,800	2,342,800	2,342,800	2,342,800	2,342,800	1,724,800	1,724,800	1,724,800	1,724,800	1,724,800	1,724,800
	その他の収入	835,420	746,498	776,168	855,982	932,047	927,437	952,379	957,683	906,208	835,717	777,001	956,447	1,176,819	1,401,867	1,424,650	1,384,956
	歳入合計	11,587,240	11,199,648	11,009,032	10,254,229	10,173,015	10,028,190	9,951,151	9,853,188	9,669,230	9,465,535	8,705,436	8,683,276	8,692,659	8,706,007	8,516,369	8,345,592
歳出	人件費	1,985,482	1,930,960	1,828,637	1,774,116	1,719,594	1,665,073	1,610,552	1,556,030	1,501,509	1,446,988	1,392,466	1,337,945	1,283,424	1,228,902	1,174,381	1,174,381
	物件費	1,704,022	1,525,676	1,410,331	1,231,985	1,179,639	1,127,293	1,090,754	1,074,948	1,059,142	1,043,336	1,027,530	1,010,137	992,745	975,353	957,961	940,569
	維持補修費	233,334	233,334	233,334	233,334	233,334	233,334	233,334	233,334	233,334	233,334	233,334	233,334	233,334	233,334	233,334	233,334
	扶助費	373,878	374,198	374,518	374,837	375,157	375,477	374,857	374,238	373,619	372,999	372,380	369,494	366,608	363,722	360,836	357,950
	補助費等	1,622,802	1,525,630	1,428,457	1,331,284	1,234,111	1,136,939	1,055,055	1,039,766	1,024,477	1,009,188	993,900	977,077	960,254	943,431	926,608	909,785
	公債費	2,065,016	1,951,202	1,888,143	1,740,114	1,798,106	1,812,991	1,875,805	1,963,561	2,060,133	2,164,238	2,274,775	2,378,440	2,486,775	2,599,075	2,508,390	2,382,045
	投資的経費	2,214,363	2,214,363	2,214,363	2,214,363	2,214,363	2,214,363	2,214,363	2,214,363	2,214,363	2,214,363	1,563,363	1,563,363	1,563,363	1,563,363	1,563,363	1,563,363
	その他の経費	1,388,342	1,382,811	1,408,017	976,699	1,048,300	1,039,226	1,059,127	1,059,391	1,002,877	927,346	847,688	813,486	806,156	798,826	791,495	784,165
	歳出合計	11,587,240	11,138,174	10,785,800	9,876,733	9,802,606	9,604,696	9,513,847	9,515,632	9,469,453	9,411,792	8,705,436	8,683,276	8,692,659	8,706,007	8,516,369	8,345,592
歳入歳出差引	0	61,473	223,233	377,496	370,409	423,494	437,304	337,556	199,777	53,743	0	0	0	0	0	0	



(2) 瀬棚町

(単位:千円)

区分	H15	H16	H17	H18	H19	H20	H21	H22	H23	H24	H25	H26	H27	H28	H29	H30	H31	H32
歳入																		
地方税	156,351	150,693	149,759	149,029	148,299	147,568	146,841	146,110	145,270	144,429	143,592	142,751	141,911	141,210	140,506	139,805	139,104	138,400
地方譲与税	29,000	32,773	32,773	32,773	32,773	32,773	32,773	32,773	32,773	32,773	32,773	32,773	32,773	32,773	32,773	32,773	32,773	32,773
その他交付金等	42,800	40,801	40,801	40,801	40,801	40,801	40,801	40,801	40,801	40,801	40,801	40,801	40,801	40,801	40,801	40,801	40,801	40,801
地方交付税	1,858,844	1,713,173	1,661,778	1,610,383	1,558,987	1,507,592	1,456,197	1,404,802	1,353,407	1,302,011	1,250,616	1,199,221	1,199,221	1,199,221	1,199,221	1,199,221	1,199,221	1,199,221
国庫支出金	109,092	95,104	118,069	118,069	118,069	118,069	118,069	118,069	118,069	118,069	118,069	118,069	118,069	118,069	118,069	118,069	118,069	118,069
道支出金	163,306	94,640	135,823	135,823	135,823	135,823	135,823	135,823	135,823	135,823	135,823	135,823	135,823	135,823	135,823	135,823	135,823	135,823
地方債	392,500	267,200	320,400	320,400	320,400	320,400	320,400	320,400	320,400	320,400	320,400	320,400	320,400	320,400	320,400	320,400	320,400	320,400
その他の収入	602,857	528,312	545,744	322,504	322,183	321,861	321,540	321,218	320,458	319,697	318,937	318,176	317,415	316,311	315,207	314,102	312,998	311,893
歳入合計	3,354,750	2,922,696	3,005,146	2,729,781	2,677,334	2,624,887	2,572,443	2,519,996	2,467,000	2,414,004	2,361,010	2,308,014	2,306,413	2,304,608	2,302,799	2,300,994	2,299,189	2,297,380
歳出																		
人件費	746,278	714,905	714,905	714,905	714,905	714,905	714,905	714,905	714,905	714,905	714,905	714,905	714,905	714,905	714,905	714,905	714,905	714,905
物件費	496,671	498,478	498,478	498,478	498,478	498,478	498,478	498,478	498,478	498,478	498,478	498,478	498,478	498,478	498,478	498,478	498,478	498,478
維持補修費	51,720	43,469	43,469	43,469	43,469	43,469	43,469	43,469	43,469	43,469	43,469	43,469	43,469	43,469	43,469	43,469	43,469	43,469
扶助費	129,268	117,053	119,271	120,833	122,396	123,959	125,521	127,084	128,025	128,965	129,905	130,846	131,786	131,786	131,307	131,067	130,827	130,587
補助費等	334,025	296,145	301,063	301,019	300,974	300,929	300,884	300,840	300,734	300,628	300,522	300,416	300,311	300,157	300,003	299,850	299,696	299,542
公債費	806,940	781,430	757,576	702,060	651,463	581,578	530,885	475,146	453,274	451,647	453,970	459,683	468,322	479,491	492,859	508,142	488,147	481,415
投資的経費	468,744	223,272	430,928	430,928	430,928	430,928	430,928	430,928	430,928	430,928	430,928	430,928	430,928	430,928	430,928	430,928	430,928	430,928
その他の経費	273,073	247,944	242,605	242,248	241,891	241,535	241,178	240,821	239,977	239,134	238,290	237,446	236,602	235,758	234,914	234,070	233,226	232,382
歳出合計	3,306,719	2,922,696	3,108,295	3,053,940	3,004,504	2,935,780	2,886,249	2,831,671	2,809,789	2,808,154	2,810,467	2,816,171	2,824,800	2,834,350	2,846,099	2,859,763	2,838,149	2,829,798
歳入歳出差引	48,031	0	-103,148	-324,158	-327,169	-310,893	-313,806	-311,675	-342,789	-394,150	-449,456	-508,157	-518,387	-529,743	-543,300	-558,769	-538,960	-532,418



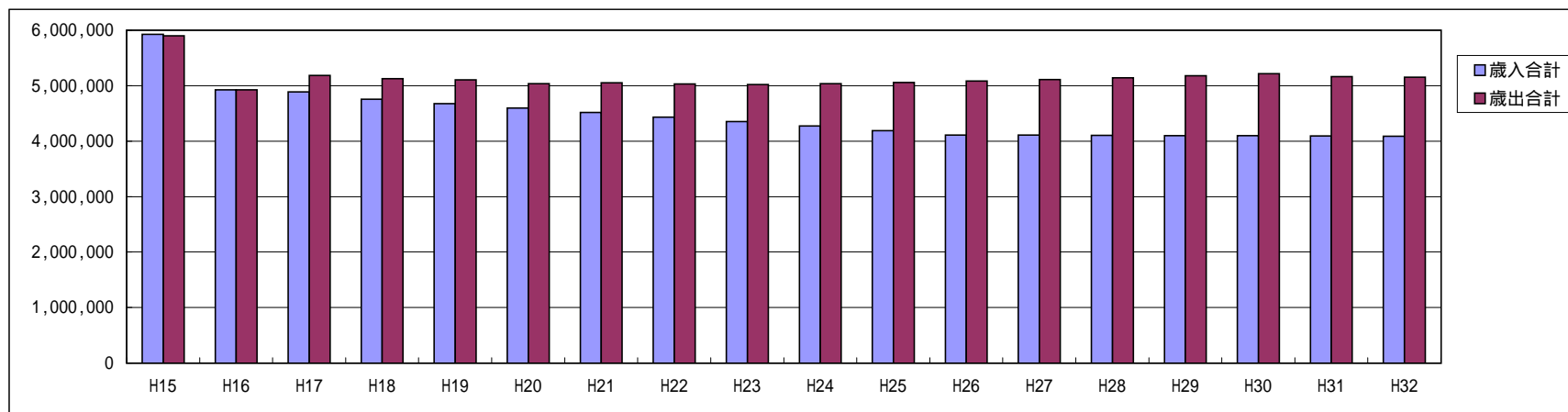
推計人口 (単位:人)

	H15	H16	H17	H18	H19	H20	H21	H22	H23	H24	H25	H26	H27	H28	H29	H30	H31	H32
総人口	2,797	2,790	2,782	2,775	2,768	2,761	2,754	2,747	2,730	2,713	2,696	2,680	2,663	2,639	2,614	2,590	2,566	2,541
年少人口	364	366	368	374	380	386	392	398	401	404	407	410	414	410	406	403	399	396
生産年齢人口	1,644	1,614	1,585	1,562	1,539	1,516	1,494	1,471	1,445	1,418	1,392	1,366	1,340	1,318	1,296	1,274	1,252	1,230
老年人口	789	809	829	839	849	859	868	878	884	891	897	903	909	911	912	913	914	915

(3)北檜山町

(単位:千円)

区分	H15	H16	H17	H18	H19	H20	H21	H22	H23	H24	H25	H26	H27	H28	H29	H30	H31	H32
歳入																		
地方税	399,864	370,583	370,393	368,032	365,668	363,304	360,943	358,579	355,765	352,947	350,130	347,316	344,498	341,924	339,349	336,775	334,200	331,626
地方譲与税	88,000	102,720	102,720	102,720	102,720	102,720	102,720	102,720	102,720	102,720	102,720	102,720	102,720	102,720	102,720	102,720	102,720	102,720
その他交付金等	110,303	111,289	111,289	111,289	111,289	111,289	111,289	111,289	111,289	111,289	111,289	111,289	111,289	111,289	111,289	111,289	111,289	111,289
地方交付税	2,764,011	2,581,983	2,504,524	2,427,064	2,349,605	2,272,145	2,194,686	2,117,226	2,039,767	1,962,307	1,884,848	1,807,388	1,807,388	1,807,388	1,807,388	1,807,388	1,807,388	1,807,388
国庫支出金	229,415	208,161	252,806	252,806	252,806	252,806	252,806	252,806	252,806	252,806	252,806	252,806	252,806	252,806	252,806	252,806	252,806	252,806
道支出金	796,887	442,191	526,982	526,982	526,982	526,982	526,982	526,982	526,982	526,982	526,982	526,982	526,982	526,982	526,982	526,982	526,982	526,982
地方債	999,900	582,800	672,400	672,400	672,400	672,400	672,400	672,400	672,400	672,400	672,400	672,400	672,400	672,400	672,400	672,400	672,400	672,400
その他の収入	535,831	525,259	348,489	294,874	294,259	293,644	293,029	292,414	291,717	291,021	290,324	289,627	288,930	288,178	287,427	286,675	285,923	285,172
歳入合計	5,924,211	4,924,986	4,889,603	4,756,167	4,675,729	4,595,290	4,514,855	4,434,416	4,353,446	4,272,472	4,191,498	4,110,528	4,107,014	4,103,687	4,100,361	4,097,035	4,093,709	4,090,383
歳出																		
人件費	767,278	773,087	773,087	773,087	773,087	773,087	773,087	773,087	773,087	773,087	773,087	773,087	773,087	773,087	773,087	773,087	773,087	773,087
物件費	804,500	695,959	695,959	695,959	695,959	695,959	695,959	695,959	695,959	695,959	695,959	695,959	695,959	695,959	695,959	695,959	695,959	695,959
維持補修費	94,250	163,156	163,156	163,156	163,156	163,156	163,156	163,156	163,156	163,156	163,156	163,156	163,156	163,156	163,156	163,156	163,156	163,156
扶助費	153,623	170,458	170,005	169,261	168,516	167,771	167,027	166,282	165,537	164,792	164,047	163,302	162,557	161,812	161,067	160,322	159,577	158,832
補助費等	1,198,326	980,262	1,069,245	1,069,245	1,069,245	1,069,245	1,069,245	1,069,245	1,069,245	1,069,245	1,069,245	1,069,245	1,069,245	1,069,245	1,069,245	1,069,245	1,069,245	1,069,245
公債費	970,100	921,808	888,438	835,098	815,956	752,359	768,293	754,980	745,259	765,576	791,019	820,965	854,868	892,252	932,696	975,834	927,205	919,933
投資的経費	1,472,134	569,832	939,703	939,703	939,703	939,703	939,703	939,703	939,703	939,703	939,703	939,703	939,703	939,703	939,703	939,703	939,703	939,703
その他の経費	439,000	650,424	485,420	482,385	479,350	476,316	473,281	470,246	466,808	463,369	459,931	456,493	453,054	449,345	445,637	441,928	438,219	434,511
歳出合計	5,899,211	4,924,986	5,185,013	5,127,894	5,104,972	5,037,596	5,049,751	5,032,659	5,018,916	5,035,213	5,056,635	5,082,559	5,112,442	5,144,617	5,179,853	5,217,783	5,163,946	5,151,466
歳入歳出差引	25,000	0	-295,410	-371,726	-429,243	-442,306	-534,896	-598,242	-665,470	-762,741	-865,136	-972,032	-1,005,428	-1,040,930	-1,079,492	-1,120,748	-1,070,238	-1,061,084



推計人口	H15	H16	H17	H18	H19	H20	H21	H22	H23	H24	H25	H26	H27	H28	H29	H30	H31	H32
総人口	6,079	6,008	5,937	5,860	5,782	5,705	5,627	5,550	5,462	5,375	5,287	5,199	5,111	5,017	4,922	4,827	4,733	4,638
年少人口	773	753	734	721	709	696	684	671	658	645	632	619	606	584	561	539	517	494
生産年齢人口	3,528	3,464	3,400	3,334	3,267	3,201	3,135	3,068	2,989	2,910	2,831	2,752	2,673	2,601	2,529	2,456	2,384	2,312
老年人口	1,778	1,791	1,803	1,805	1,806	1,808	1,809	1,811	1,815	1,819	1,824	1,828	1,832	1,832	1,832	1,832	1,832	1,832





(3) 北檜山町の財政推移(個表)

(単位:人)

	H9	H10	H11	H12	H13	H14	H15	H16	H17	H18	H19	H20	H21	H22	H23	H24	H25	H26	H27	H28	H29	H30	H31	H32
総人口				6,292	6,221	6,150	6,079	6,008	5,937	5,860	5,782	5,705	5,627	5,550	5,462	5,375	5,287	5,199	5,111	5,017	4,922	4,827	4,733	4,638
年少人口				831	812	792	773	753	734	721	709	696	684	671	658	645	632	619	606	584	561	539	517	494
生産年齢人口				3,721	3,657	3,593	3,528	3,464	3,400	3,334	3,267	3,201	3,135	3,068	2,999	2,910	2,831	2,752	2,673	2,601	2,529	2,456	2,384	2,312
老年人口				1,740	1,753	1,765	1,778	1,791	1,803	1,805	1,806	1,808	1,809	1,811	1,815	1,819	1,824	1,828	1,832	1,832	1,832	1,832	1,832	1,832
均等割計納税者数				2,055			1,948	1,913	1,877	1,841	1,804	1,767	1,731	1,694	1,651	1,607	1,563	1,520	1,476	1,436	1,396	1,356	1,316	1,276

収入の状況

(単位:千円)

区分	H9	H10	H11	H12	H13	H14	H15	H16	H17	H18	H19	H20	H21	H22	H23	H24	H25	H26	H27	H28	H29	H30	H31	H32
地方税	452,836	432,754	457,657	449,213	424,778	440,111	399,864	370,583	370,393	368,032	365,668	363,304	360,943	358,579	355,765	352,947	350,130	347,316	344,498	341,924	339,349	336,775	334,200	331,626
(1)市町村民税個人均等割	2,366	2,385	4,074	4,109	3,709	4,105	4,060	3,640	5,631	5,523	5,412	5,301	5,193	5,082	4,953	4,821	4,689	4,560	4,428	4,308	4,188	4,068	3,948	3,828
(2)市町村民税所得割	190,140	157,632	170,682	171,887	156,675	159,312	134,227	117,682	115,501	113,248	110,995	108,742	106,489	104,236	101,551	98,865	96,180	93,495	90,809	88,355	85,900	83,446	80,991	78,537
(3)市町村民税法人均等割	15,410	15,781	15,353	15,020	13,262	13,312	12,288	12,792	12,792	12,792	12,792	12,792	12,792	12,792	12,792	12,792	12,792	12,792	12,792	12,792	12,792	12,792	12,792	12,792
(4)市町村民税法人税割	26,904	32,084	36,280	27,775	19,075	26,814	16,213	12,288	12,288	12,288	12,288	12,288	12,288	12,288	12,288	12,288	12,288	12,288	12,288	12,288	12,288	12,288	12,288	12,288
(5)固定資産税	162,699	166,117	170,981	171,431	175,893	181,205	174,840	173,439	173,439	173,439	173,439	173,439	173,439	173,439	173,439	173,439	173,439	173,439	173,439	173,439	173,439	173,439	173,439	173,439
(6)都市計画税	0	0	0	0	0	0	0	0	0	0	0	0	0	0	0	0	0	0	0	0	0	0	0	0
(7)その他	55,317	58,755	60,287	58,991	56,164	55,363	58,236	50,742	50,742	50,742	50,742	50,742	50,742	50,742	50,742	50,742	50,742	50,742	50,742	50,742	50,742	50,742	50,742	50,742
2地方譲与税	96,009	86,114	88,510	90,541	90,506	90,976	88,000	102,720	102,720	102,720	102,720	102,720	102,720	102,720	102,720	102,720	102,720	102,720	102,720	102,720	102,720	102,720	102,720	102,720
3利子割交付金等	5,366	4,333	4,585	21,379	20,062	6,251	4,136	5,180	5,180	5,180	5,180	5,180	5,180	5,180	5,180	5,180	5,180	5,180	5,180	5,180	5,180	5,180	5,180	5,180
4地方消費税交付金	14,955	66,097	62,321	64,270	61,666	53,190	57,700	58,000	58,000	58,000	58,000	58,000	58,000	58,000	58,000	58,000	58,000	58,000	58,000	58,000	58,000	58,000	58,000	58,000
5自動車取得税交付金	40,675	40,688	35,812	35,930	38,569	30,281	31,000	31,000	31,000	31,000	31,000	31,000	31,000	31,000	31,000	31,000	31,000	31,000	31,000	31,000	31,000	31,000	31,000	31,000
6地方特例交付金			11,383	16,666	16,192	15,531	16,267	15,909	15,909	15,909	15,909	15,909	15,909	15,909	15,909	15,909	15,909	15,909	15,909	15,909	15,909	15,909	15,909	15,909
7地方交付税	3,186,735	3,327,059	3,422,489	3,403,665	3,134,497	2,929,533	2,764,011	2,581,983	2,504,524	2,427,064	2,349,605	2,272,145	2,194,686	2,117,226	2,039,767	1,962,307	1,884,848	1,807,388	1,807,388	1,807,388	1,807,388	1,807,388	1,807,388	1,807,388
(1)普通交付税	2,905,326	3,038,078	3,098,669	3,072,651	2,824,006	2,620,516	2,496,326	2,321,583	2,251,936	2,182,288	2,112,641	2,042,993	1,973,346	1,903,698	1,834,051	1,764,403	1,694,756	1,625,108	1,625,108	1,625,108	1,625,108	1,625,108	1,625,108	1,625,108
(2)特別交付税	281,409	288,981	323,820	331,014	310,491	309,017	267,685	260,400	252,588	244,776	236,964	229,152	221,340	213,528	205,716	197,904	190,092	182,280	182,280	182,280	182,280	182,280	182,280	182,280
8交通安全対策特別交付金	1,432	1,406	1,426	1,275	1,241	1,256	1,200	1,200	1,200	1,200	1,200	1,200	1,200	1,200	1,200	1,200	1,200	1,200	1,200	1,200	1,200	1,200	1,200	1,200
9分担金・負担金	39,593	54,977	51,982	34,888	25,281	69,119	107,997	47,720	47,156	46,541	45,926	45,311	44,696	44,081	43,384	42,688	41,991	41,294	40,597	39,845	39,094	38,342	37,590	36,839
10使用料・手数料	92,204	109,236	127,862	125,727	123,947	116,126	78,654	73,861	73,861	73,861	73,861	73,861	73,861	73,861	73,861	73,861	73,861	73,861	73,861	73,861	73,861	73,861	73,861	73,861
11国庫支出金	593,979	617,818	580,927	309,496	281,791	226,994	229,415	208,161	252,806	252,806	252,806	252,806	252,806	252,806	252,806	252,806	252,806	252,806	252,806	252,806	252,806	252,806	252,806	252,806
12国庫提供交付金	0	0	0	0	0	0	0	0	0	0	0	0	0	0	0	0	0	0	0	0	0	0	0	0
13都道府県支出金	947,577	447,175	375,890	268,269	339,900	289,812	796,887	442,191	526,982	526,982	526,982	526,982	526,982	526,982	526,982	526,982	526,982	526,982	526,982	526,982	526,982	526,982	526,982	526,982
14財産収入	35,752	32,683	93,385	29,932	44,422	31,175	24,730	22,698	22,698	22,698	22,698	22,698	22,698	22,698	22,698	22,698	22,698	22,698	22,698	22,698	22,698	22,698	22,698	22,698
15寄附金	5,900	3,830	71,314	270	2,400	2,070	31	31	31	31	31	31	31	31	31	31	31	31	31	31	31	31	31	31
16繰入金	938,082	106,254	235,676	200,468	179,299	167,453	149,092	213,916	53,000	0	0	0	0	0	0	0	0	0	0	0	0	0	0	0
17繰越金	29,347	25,005	63,040	33,667	27,216	17,733	21,575	2,000	0	0	0	0	0	0	0	0	0	0	0	0	0	0	0	0
18諸収入	140,201	115,676	195,471	182,140	162,258	162,512	151,743	165,033	151,743	151,743	151,743	151,743	151,743	151,743	151,743	151,743	151,743	151,743	151,743	151,743	151,743	151,743	151,743	151,743
19地方債	1,821,600	800,100	503,895	393,005	583,900	490,800	999,900	582,800	672,400	672,400	672,400	672,400	672,400	672,400	672,400	672,400	672,400	672,400	672,400	672,400	672,400	672,400	672,400	672,400
通常債					470,000	255,400	645,000	329,500	419,100	419,100	419,100	419,100	419,100	419,100	419,100	419,100	419,100	419,100	419,100	419,100	419,100	419,100	419,100	419,100
臨時債					113,900	235,400	354,900	253,300	253,300	253,300	253,300	253,300	253,300	253,300	253,300	253,300	253,300	253,300	253,300	253,300	253,300	253,300	253,300	253,300
歳入総額	8,442,243	6,271,205	6,383,625	5,660,801	5,557,925	5,140,923	5,924,211	4,924,986	4,889,603	4,756,167	4,675,729	4,595,290	4,514,855	4,434,416	4,353,446	4,272,472	4,191,498	4,110,528	4,107,014	4,103,687	4,100,361	4,097,035	4,093,709	4,090,383

支出の状況(性質別)

(単位:千円)

区分	H9	H10	H11	H12	H13	H14	H15	H16	H17	H18	H19	H20	H21	H22	H23	H24	H25	H26	H27	H28	H29	H30	H31	H32
1人件費	820,739	847,295	851,055	822,920	812,220	758,552	767,278	773,087	773,087	773,087	773,087	773,087	773,087	773,087	773,087	773,087	773,087	773,087	773,087	773,087	773,087	773,087	773,087	
2物件費	790,179	851,161	871,572	751,836	721,453	673,221	804,500	695,959	695,959	695,959	695,959	695,959	695,959	695,959	695,959	695,959	695,959	695,959	695,959	695,959	695,959	695,959	695,959	
3維持補修費	74,633	84,572	95,860	167,962	145,385	157,476	94,250	163,156	163,1															



(2) 瀬畑町の財政推移 (個表)

(単位: 人)

	H9	H10	H11	H12	H13	H14	H15	H16	H17	H18	H19	H20	H21	H22	H23	H24	H25	H26	H27	H28	H29	H30	H31	H32
総人口				2,820	2,812	2,805	2,797	2,790	2,782	2,775	2,768	2,761	2,754	2,747	2,730	2,713	2,696	2,680	2,663	2,639	2,614	2,590	2,566	2,541
年少人口				357	359	361	364	366	368	374	380	386	392	398	401	404	407	410	414	410	406	403	399	396
生産年齢人口				1,734	1,704	1,674	1,644	1,614	1,585	1,562	1,539	1,516	1,494	1,471	1,445	1,418	1,392	1,366	1,340	1,318	1,296	1,274	1,252	1,230
老年人口				729	749	769	789	809	829	839	849	859	868	878	884	891	897	903	909	911	912	913	914	915
均等割計納税者数				905			858	843	827	815	803	791	780	768	754	740	727	713	699	688	676	665	654	642

収入の状況

(単位: 千円)

区分	H9	H10	H11	H12	H13	H14	H15	H16	H17	H18	H19	H20	H21	H22	H23	H24	H25	H26	H27	H28	H29	H30	H31	H32
地方	179,972	169,802	176,082	160,551	163,798	163,992	156,351	150,693	149,759	149,029	148,299	147,568	146,841	146,110	145,270	144,429	143,592	142,751	141,911	141,210	140,506	139,805	139,104	138,400
(1) 市町村民税個人均等割	1,741	1,805	1,794	1,810	1,813	1,753	1,776	2,503	2,481	2,445	2,409	2,373	2,340	2,304	2,262	2,220	2,181	2,139	2,097	2,064	2,028	1,995	1,962	1,926
(2) 市町村民税所得割	69,163	58,233	62,697	58,444	56,966	59,397	54,694	49,255	48,343	47,649	46,955	46,260	45,566	44,871	44,073	43,274	42,476	41,677	40,879	40,211	39,543	38,875	38,207	37,539
(3) 市町村民税法人均等割	7,033	7,342	6,964	7,165	8,353	8,746	9,932	7,908	7,908	7,908	7,908	7,908	7,908	7,908	7,908	7,908	7,908	7,908	7,908	7,908	7,908	7,908	7,908	7,908
(4) 市町村民税法人税割	19,165	19,072	19,521	10,999	9,407	8,435	7,506	5,897	5,897	5,897	5,897	5,897	5,897	5,897	5,897	5,897	5,897	5,897	5,897	5,897	5,897	5,897	5,897	5,897
(5) 固定資産税	63,953	64,122	63,005	60,402	65,266	64,478	61,670	63,032	63,032	63,032	63,032	63,032	63,032	63,032	63,032	63,032	63,032	63,032	63,032	63,032	63,032	63,032	63,032	63,032
(6) 都市計画税	0	0	0	0	0	0	0	0	0	0	0	0	0	0	0	0	0	0	0	0	0	0	0	0
(7) その他	18,917	19,228	22,101	21,731	21,993	21,183	20,773	22,098	22,098	22,098	22,098	22,098	22,098	22,098	22,098	22,098	22,098	22,098	22,098	22,098	22,098	22,098	22,098	22,098
2 地方譲与税	29,430	25,019	25,918	26,507	26,506	26,574	29,000	32,773	32,773	32,773	32,773	32,773	32,773	32,773	32,773	32,773	32,773	32,773	32,773	32,773	32,773	32,773	32,773	32,773
3 利子割交付金等	1,994	1,587	1,692	8,100	7,615	2,354	1,300	1,300	1,300	1,300	1,300	1,300	1,300	1,300	1,300	1,300	1,300	1,300	1,300	1,300	1,300	1,300	1,300	1,300
4 地方消費税交付金	6,950	27,810	26,220	27,040	26,156	23,005	26,000	25,000	25,000	25,000	25,000	25,000	25,000	25,000	25,000	25,000	25,000	25,000	25,000	25,000	25,000	25,000	25,000	25,000
5 自動車取得税交付金	11,508	11,682	10,382	10,426	11,200	8,774	10,500	9,500	9,500	9,500	9,500	9,500	9,500	9,500	9,500	9,500	9,500	9,500	9,500	9,500	9,500	9,500	9,500	9,500
6 地方特例交付金			4,079	6,035	5,371	5,157	5,000	5,000	5,000	5,000	5,000	5,000	5,000	5,000	5,000	5,000	5,000	5,000	5,000	5,000	5,000	5,000	5,000	5,000
7 地方交付税	2,089,817	2,129,356	2,154,978	2,182,623	2,096,680	1,981,804	1,858,844	1,713,173	1,661,778	1,610,383	1,558,987	1,507,592	1,456,197	1,404,802	1,353,407	1,302,011	1,250,616	1,199,221	1,199,221	1,199,221	1,199,221	1,199,221	1,199,221	1,199,221
(1) 普通交付税	1,829,377	1,865,772	1,871,529	1,895,174	1,825,464	1,728,590	1,623,844	1,503,173	1,458,078	1,412,983	1,367,887	1,322,792	1,277,697	1,232,602	1,187,507	1,142,411	1,097,316	1,052,221	1,052,221	1,052,221	1,052,221	1,052,221	1,052,221	1,052,221
(2) 特別交付税	260,440	263,584	283,449	287,449	271,216	253,214	235,000	210,000	203,700	197,400	191,100	184,800	178,500	172,200	165,900	159,600	153,300	147,000	147,000	147,000	147,000	147,000	147,000	147,000
8 交通安全対策特別交付金	500	494	510	0	0	0	0	1	1	1	1	1	1	1	1	1	1	1	1	1	1	1	1	1
9 分担金・負担金	123,770	124,972	133,200	143,757	160,769	164,285	127,971	126,783	126,437	126,115	125,794	125,472	125,151	124,829	124,069	123,308	122,548	121,787	121,026	119,922	118,818	117,713	116,609	115,504
10 使用料・手数料	90,440	107,065	125,652	118,300	116,518	109,281	110,924	120,222	120,222	120,222	120,222	120,222	120,222	120,222	120,222	120,222	120,222	120,222	120,222	120,222	120,222	120,222	120,222	120,222
11 国庫支出金	374,721	377,988	336,954	301,055	182,276	110,536	109,092	95,104	118,069	118,069	118,069	118,069	118,069	118,069	118,069	118,069	118,069	118,069	118,069	118,069	118,069	118,069	118,069	118,069
12 国庫取得交付金	0	0	0	0	0	0	0	0	0	0	0	0	0	0	0	0	0	0	0	0	0	0	0	0
13 都道府県支出金	306,586	317,091	330,033	304,621	330,810	317,321	316,306	94,640	135,823	135,823	135,823	135,823	135,823	135,823	135,823	135,823	135,823	135,823	135,823	135,823	135,823	135,823	135,823	135,823
14 財産収入	56,111	54,692	37,369	67,703	49,190	17,967	20,185	17,994	17,967	17,967	17,967	17,967	17,967	17,967	17,967	17,967	17,967	17,967	17,967	17,967	17,967	17,967	17,967	17,967
15 寄附金	4,500	500	525	12,100	200	1,100	351	0	0	0	0	0	0	0	0	0	0	0	0	0	0	0	0	0
16 繰入金	196,620	139,995	100,447	177,132	143,741	385,826	206,017	185,113	222,918	0	0	0	0	0	0	0	0	0	0	0	0	0	0	0
17 繰越金	10,142	18,111	27,192	10,128	26,385	14,071	13,000	20,000	0	0	0	0	0	0	0	0	0	0	0	0	0	0	0	0
18 諸収入	83,528	87,475	151,949	153,068	111,866	103,631	124,409	58,200	58,200	58,200	58,200	58,200	58,200	58,200	58,200	58,200	58,200	58,200	58,200	58,200	58,200	58,200	58,200	58,200
19 地方債	836,300	520,700	423,400	264,100	392,200	294,910	392,500	267,200	320,400	320,400	320,400	320,400	320,400	320,400	320,400	320,400	320,400	320,400	320,400	320,400	320,400	320,400	320,400	320,400
通常債					334,400	180,310	200,100	129,900	183,100	183,100	183,100	183,100	183,100	183,100	183,100	183,100	183,100	183,100	183,100	183,100	183,100	183,100	183,100	183,100
臨時債					57,800	114,600	192,400	137,300	137,300	137,300	137,300	137,300	137,300	137,300	137,300	137,300	137,300	137,300	137,300	137,300	137,300	137,300	137,300	137,300
歳入総額	4,402,889	4,114,339	3,866,582	3,773,246	3,651,281	3,530,588	3,354,750	2,922,696	3,005,146	2,729,781	2,677,334	2,624,887	2,572,443	2,519,996	2,467,000	2,414,004	2,361,010	2,308,014	2,306,413	2,304,608	2,302,799	2,300,994	2,299,189	2,297,380

支出の状況 (性質別)

(単位: 千円)

区分	H9	H10	H11	H12	H13	H14	H15	H16	H17	H18	H19	H20	H21	H22	H23	H24	H25	H26	H27	H28	H29	H30	H31	H32
1 人件費	833,009	837,874	827,361	793,718	826,955	789,295	746,278	714,905	714,905	714,905	714,905	714,905	714,905	714,905	714,905	714,905	714,905	714,905	714,905	714,905	714,905	714,905	714,905	714,905
2 物件費	474,482	487,147	494,836	444,324	471,639	471,368	496,671	498,478	498,478	498,478	498,478	498,478	498,478	498,478	498,478	498,478	498,478	498,478	498,478	498,478	498,478	498,478	498,478	498,478
3 維持補修費	45,555	44,188	48,290	47,403	46,428	49,031	51,720	43,469	43,469	43,469	43,469	43,469	43,469	43,469	43,469	43,469	43,469	43,469	43,469	43,469	43,469	43,469	43,469	43,469
4 扶助費	109,253	106,492	104,805	83,792	90,033</																			

### 3 個表

#### (1) 大成町の財政推移 (個表)

(単位: 人)

	H9	H10	H11	H12	H13	H14	H15	H16	H17	H18	H19	H20	H21	H22	H23	H24	H25	H26	H27	H28	H29	H30	H31	H32	
総人口				2,730	2,690	2,650	2,609	2,569	2,529	2,486	2,444	2,401	2,358	2,315	2,268	2,221	2,174	2,127	2,080	2,032	1,984	1,936	1,889	1,841	
年少人口				277	270	262	255	248	240	234	228	222	216	210	203	196	190	183	176	169	161	154	146	139	
生産年齢人口				1,529	1,485	1,441	1,396	1,352	1,308	1,272	1,237	1,201	1,166	1,130	1,097	1,064	1,031	998	965	934	903	871	840	809	
老年人口				924	935	947	958	970	981	980	979	978	977	976	976	968	961	953	946	939	929	920	911	902	893
均等割推計納税者数				1,014			926	897	867	844	820	797	773	750	728	706	684	662	640	619	599	578	557	536	

#### 収入の状況

(単位: 千円)

区分	H9	H10	H11	H12	H13	H14	H15	H16	H17	H18	H19	H20	H21	H22	H23	H24	H25	H26	H27	H28	H29	H30	H31	H32
地方	147,688	140,073	142,895	135,975	122,500	125,185	118,369	116,932	116,544	115,449	114,351	113,256	112,157	111,062	110,044	109,025	108,006	106,987	105,969	105,002	104,038	103,071	102,104	101,137
(1)市町村民税個人均等割	2,122	2,371	2,061	2,028	1,609	1,755	1,734	1,713	2,601	2,532	2,460	2,391	2,319	2,250	2,184	2,118	2,052	1,986	1,920	1,857	1,797	1,734	1,671	1,608
(2)市町村民税所得割	62,159	52,449	56,198	55,345	44,917	44,175	39,643	39,040	37,764	36,738	35,712	34,686	33,659	32,633	31,681	30,728	29,775	28,822	27,870	26,966	26,062	25,158	24,254	23,350
(3)市町村民税法人均等割	4,452	5,173	5,160	4,834	4,709	5,104	4,632	5,100	5,100	5,100	5,100	5,100	5,100	5,100	5,100	5,100	5,100	5,100	5,100	5,100	5,100	5,100	5,100	5,100
(4)市町村民税法人均等割	3,266	6,488	6,310	2,479	1,428	2,541	1,788	1,030	1,030	1,030	1,030	1,030	1,030	1,030	1,030	1,030	1,030	1,030	1,030	1,030	1,030	1,030	1,030	1,030
(5)固定資産税	55,249	51,814	51,772	49,304	48,063	50,436	48,558	47,420	47,420	47,420	47,420	47,420	47,420	47,420	47,420	47,420	47,420	47,420	47,420	47,420	47,420	47,420	47,420	47,420
(6)都市計画税	0	0	0	0	0	0	0	0	0	0	0	0	0	0	0	0	0	0	0	0	0	0	0	0
(7)その他	20,440	21,778	21,394	21,985	21,774	21,174	22,014	22,629	22,629	22,629	22,629	22,629	22,629	22,629	22,629	22,629	22,629	22,629	22,629	22,629	22,629	22,629	22,629	22,629
地方譲与税	26,624	22,259	22,898	23,875	23,980	24,773	21,600	27,300	27,300	27,300	27,300	27,300	27,300	27,300	27,300	27,300	27,300	27,300	27,300	27,300	27,300	27,300	27,300	27,300
利子割交付金等	1,884	1,492	1,559	7,299	6,805	2,064	1,308	1,400	1,400	1,400	1,400	1,400	1,400	1,400	1,400	1,400	1,400	1,400	1,400	1,400	1,400	1,400	1,400	1,400
地方消費税交付金	5,884	25,092	23,659	24,399	23,293	19,786	16,200	17,200	17,200	17,200	17,200	17,200	17,200	17,200	17,200	17,200	17,200	17,200	17,200	17,200	17,200	17,200	17,200	17,200
自動車取得税交付金	10,786	10,635	9,393	9,617	10,363	8,347	8,100	7,800	7,800	7,800	7,800	7,800	7,800	7,800	7,800	7,800	7,800	7,800	7,800	7,800	7,800	7,800	7,800	7,800
地方特例交付金			3,942	5,372	4,783	3,625	3,998	3,700	3,700	3,700	3,700	3,700	3,700	3,700	3,700	3,700	3,700	3,700	3,700	3,700	3,700	3,700	3,700	3,700
地方交付税	1,758,804	1,785,302	1,811,536	1,807,437	1,671,456	1,550,488	1,405,824	1,320,980	1,281,351	1,241,721	1,202,092	1,162,462	1,122,833	1,083,204	1,043,574	1,003,945	964,315	924,686	924,686	924,686	924,686	924,686	924,686	924,686
(1)普通交付税	1,546,439	1,559,690	1,553,858	1,539,212	1,418,582	1,303,165	1,215,824	1,136,980	1,102,871	1,068,761	1,034,652	1,000,542	966,433	932,324	898,214	864,105	829,995	795,886	795,886	795,886	795,886	795,886	795,886	795,886
(2)特別交付税	212,365	225,612	257,678	268,225	252,874	247,323	190,000	184,000	178,480	172,960	167,440	161,920	156,400	150,880	145,360	139,840	134,320	128,800	128,800	128,800	128,800	128,800	128,800	128,800
交通安全対策特別交付金	0	0	0	0	0	0	1	1	1	1	1	1	1	1	1	1	1	1	1	1	1	1	1	
分担金・負担金	21,754	22,569	22,798	3,629	4,021	3,913	12,359	7,818	7,696	7,566	7,436	7,306	7,176	7,046	6,902	6,759	6,616	6,472	6,329	6,183	6,038	5,892	5,746	
使用料・手数料	49,517	44,958	48,929	59,561	62,956	60,272	55,053	53,421	53,421	53,421	53,421	53,421	53,421	53,421	53,421	53,421	53,421	53,421	53,421	53,421	53,421	53,421	53,421	53,421
国庫支出金	483,491	454,059	486,882	169,747	48,579	47,050	60,860	55,344	11,978	11,978	11,978	11,978	11,978	11,978	11,978	11,978	11,978	11,978	11,978	11,978	11,978	11,978	11,978	
国庫提供交付金	0	0	0	0	0	0	0	0	0	0	0	0	0	0	0	0	0	0	0	0	0	0	0	
都道府県支出金	365,277	298,466	173,232	88,410	74,682	77,151	180,971	127,977	27,697	27,697	27,697	27,697	27,697	27,697	27,697	27,697	27,697	27,697	27,697	27,697	27,697	27,697	27,697	
14財産収入	135,147	113,953	116,280	101,458	90,801	108,908	15,025	24,522	15,025	15,025	15,025	15,025	15,025	15,025	15,025	15,025	15,025	15,025	15,025	15,025	15,025	15,025		
15寄附金	2,850	650	890	518	5,797	771	410	104	104	104	104	104	104	104	104	104	104	104	104	104	104	104	104	
16繰入金	272,329	288,743	75,071	9,312	12,923	145,980	202,784	189,758	176,864	0	0	0	0	0	0	0	0	0	0	0	0	0	0	
17繰越金	17,619	21,965	55,824	17,553	27,389	24,002	33,743	12,000	0	0	0	0	0	0	0	0	0	0	0	0	0	0	0	
18諸収入	69,921	100,649	75,717	67,634	66,475	53,004	75,873	53,032	53,004	53,004	53,004	53,004	53,004	53,004	53,004	53,004	53,004	53,004	53,004	53,004	53,004	53,004	53,004	
19通商債	411,636	328,994	303,470	170,100	172,800	203,100	255,000	177,400	205,900	205,900	205,900	205,900	205,900	205,900	205,900	205,900	205,900	205,900	205,900	205,900	205,900	205,900		
繰入総額	3,781,211	3,659,859	3,374,975	2,701,896	2,429,603	2,458,419	2,467,478	2,196,689	2,006,984	1,789,266	1,748,408	1,707,554	1,666,696	1,625,842	1,585,050	1,544,259	1,503,467	1,462,676	1,461,513	1,460,401	1,459,291	1,458,179	1,457,066	

#### 支出の状況 (性質別)

(単位: 千円)

区分	H9	H10	H11	H12	H13	H14	H15	H16	H17	H18	H19	H20	H21	H22	H23	H24	H25	H26	H27	H28	H29	H30	H31	H32
1人件費	695,076	728,540	734,243	708,932	689,796	647,359	678,000	665,635	665,635	665,635	665,635	665,635	665,635	665,635	665,635	665,635	665,635	665,635	665,635	665,635	665,635	665,635	665,635	
2物件費	415,976	399,391	390,816	329,792	319,833	315,026	300,766	246,931	246,931	246,931	246,931	246,931	246,931	246,931	246,931	246,931	246,931	246,931	246,931	246,931	246,931	246,931	246,931	
3維持補修費	38,589	34,115	30,886	35,777	31,017	37,042	25,403	26,709	26,709	26,709	26,709	26,709	26,709	26,709	26,709	26,709	26,709	26,709	26,709	26,709	26,709	26,709		
4扶助費	249,126	253,070	250,811	62,641	63,701	57,623	89,733	84,323	84,602	84,104	83,606	83,107	82,609	82,111	81,133	80,156	79,179	78,201	77,224	76,077	74,931	73,784	72,638	
5補助費等	428,498	439,419	450,242	474,578	409,947	458,749	441,885	443,568	457,000	456,380	455,760	455,140	454,519	453,899	453,216	452,532	451,848	451,165	450,481	449,797	449,092	448,397	447,703	
6公債	445,976	454,477	532,522	453,649	460,590	469,036	457,174	466,059	419,002	392,057	376,751	340,217	329,455	311,711	306,270	312,230	328,960	341,360	354,339	367,825	381,752	396,066	386,712	
(1)既発通債									410,															